

# Intermountain Adaptation Partnership (IAP)

**Issue 7 - April 2018**

This newsletter is issued periodically as part of the Intermountain Adaptation Partnership (IAP).

For current and past issues visit the "News" tab at the IAP Web site <http://adaptationpartners.org/iap>

Please feel free to forward the newsletter to others and encourage them to sign up for the [listserv](#) to receive updates.

## IAP Contacts:

Jessica Halofsky  
[jhalo@uw.edu](mailto:jhalo@uw.edu)

Natalie Little  
[nlittle@fs.fed.us](mailto:nlittle@fs.fed.us)  
801-625-5776

Dave Peterson  
[wild@uw.edu](mailto:wild@uw.edu)

## Intermountain Regional Climate Assessment is in Final Review

The General Technical Report (GTR) is expected to publish by the end of the month. The draft may be found in the following location: [www.adaptationpartners.org/iap](http://www.adaptationpartners.org/iap) in the lower right corner. The citation for the draft is: "Halofsky, J.E.; Peterson, D.L.; Ho, J.J.; Little, N.J.; Joyce, L.A. (eds.). Climate Change Vulnerability and Adaptation in the Intermountain Region. Gen. Tech. Rep. RMRS-GTR-xxx. U.S. Department of Agriculture, Forest Service, Rocky Mountain Research Station. In press."

## Roll-out workshop for the IAP climate assessment: May 22-24, 2018

The in-person workshop will be held in downtown Ogden. In addition, the workshop will be virtually available at a few Forest Service Supervisor's Offices. Our partners are welcome to attend, just as were welcome at our 2016 workshops. The workshop will be free. Please register here to help with logistics: [Workshop Registration Link](#)  
While the workshop will provide some technical information, it will also be designed to be highly interactive. Much of the workshop will be recorded and made available by mid-June at: [www.adaptationpartners.org/iap](http://www.adaptationpartners.org/iap).

### Main location: Eccles Center, 2415 Washington Blvd, Ogden, UT

Primary contact: Natalie Little, [nlittle@fs.fed.us](mailto:nlittle@fs.fed.us), 801-625-5776

Hotel block at Ogden Hampton Inn is being held through April 23rd: [Hotel Registration Link](#)

Virtual locations with contact info:

### Ashley National Forest (NF), Vernal, UT

Contact: Dustin Bambrough  
[dbambrough@fs.fed.us](mailto:dbambrough@fs.fed.us), 435-781-5175

### Bridger-Teton NF, Jackson, WY

Contact: Pam Bode  
[pbode@fs.fed.us](mailto:pbode@fs.fed.us), 307-739-5513

### Dixie NF, Cedar City, UT

Contact: Susan Leslie  
[sleslie@fs.fed.us](mailto:sleslie@fs.fed.us), 435-865-3756

### Manti-La Sal NF, Price, UT

Contact: Daniel Lay  
[dlay@fs.fed.us](mailto:dlay@fs.fed.us), 435-636-3547

### Salmon-Challis NF, Salmon, ID

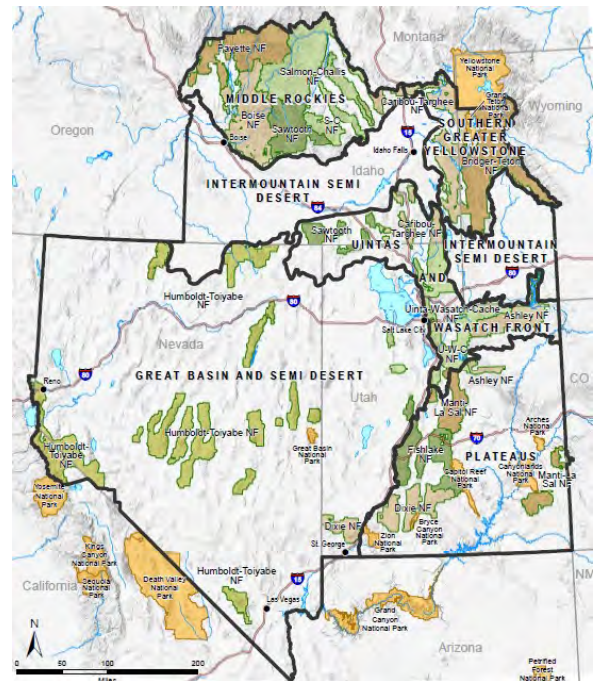
Contact: Gina Knudson  
[gknudson@fs.fed.us](mailto:gknudson@fs.fed.us), 208-756-5551

### Payette NF, McCall, ID

Contact: Susan Miller  
[smiller@fs.fed.us](mailto:smiller@fs.fed.us), 208-634-0743

### Sawtooth NF, Twin Falls, ID

Contact: Michael Haney  
[michaelhaney@fs.fed.us](mailto:michaelhaney@fs.fed.us), 208-737-3213



## Preliminary Workshop Schedule

Times:	May 22: 8:30-5pm	May 23: 8:30-5pm	May 24: 8:30-4pm
Main	Intro/Climate	Vegetation/Wildlife	Carbon/Legal Issues
Topics:	Planning/NEPA	Ecological Disturbance	Communications
	Hydro/Aquatics	Ecosystem Services/Adaptation	Science Partners
	Rec./Infrastructure/Heritage	GIS/Maps/Data	Moving Forward

