



Intermountain Adaptation Partnership (IAP)

Issue 8 - May 2018

This newsletter is issued periodically as part of the Intermountain Adaptation Partnership (IAP).

For current and past issues visit the "News" tab at the IAP Web site <http://adaptationpartners.org/iap>

Please feel free to forward the newsletter to others and encourage them to sign up for the [listserv](#) to receive updates.

IAP Contacts:

Jessica Halofsky
jhalo@uw.edu

Natalie Little
nlittle@fs.fed.us
801-625-5776

Dave Peterson
wild@uw.edu

Intermountain Regional Climate Assessment is Available!

The General Technical Report (GTR) has been on-line published through Rocky Mountain Research Station. Links to the two-part GTR may be accessed at www.fs.usda.gov/goto/cc and shortly at www.treesearch/fs.fed.us and www.adaptationpartners.org/iap in the lower right corner. The citation for the GTR is: "Halofsky, J.E.; Peterson, D.L.; Ho, J.J.; Little, N.J.; Joyce, L.A. (eds.). Climate Change Vulnerability and Adaptation in the Intermountain Region. Gen. Tech. Rep. RMRS-GTR-375. U.S. Department of Agriculture, Forest Service, Rocky Mountain Research Station. 2018."

Roll-out workshop for the IAP climate assessment: May 22-24, 2018

The in-person workshop will be held in downtown Ogden. In addition, the workshop will be virtually available at a few Forest Service Supervisor's Offices. Our partners are welcome to attend, just as were welcome at our 2016 workshops. The workshop will be free. Please register here to help with logistics: [Workshop Registration Link](#)

The current agenda may be accessed at: www.fs.usda.gov/goto/cc.

While the workshop will provide some technical information, it will also be designed to be highly interactive. Much of the workshop will be recorded and made available by mid-June at:

www.fs.usda.gov/goto/cc and www.adaptationpartners.org/iap.

Main location: Eccles Center, 2415 Washington Blvd, Ogden, UT

Primary contact: Natalie Little, nlittle@fs.fed.us, 801-625-5776

Virtual locations with contact info:

Ashley National Forest (NF), Vernal, UT

Contact: Dustin Bambrough
dbambrough@fs.fed.us, 435-781-5175

Bridger-Teton NF, Jackson, WY

Contact: Pam Bode
pbode@fs.fed.us, 307-739-5513

Dixie NF, Cedar City, UT

Contact: Susan Leslie
sleslie@fs.fed.us, 435-865-3756

Manti-La Sal NF, Price, UT

Contact: Daniel Lay
dlay@fs.fed.us, 435-636-3547

Payette NF, McCall, ID

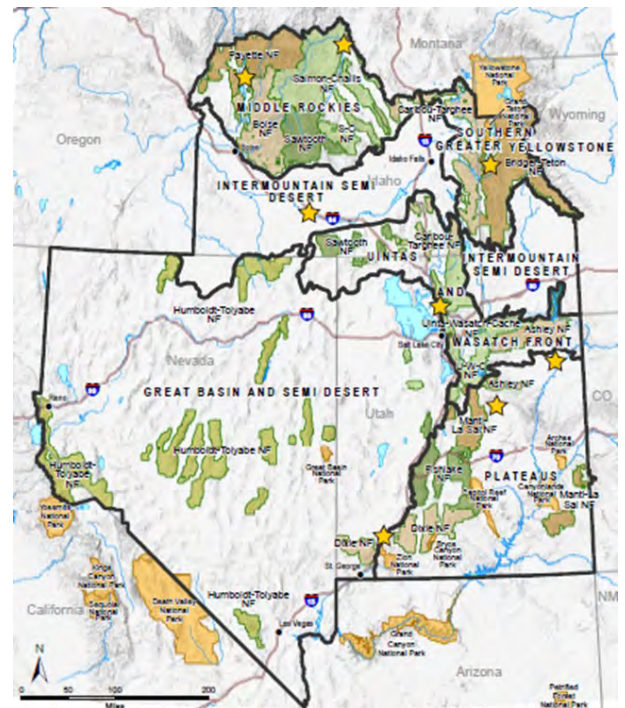
Contact: Susan Miller
smiller@fs.fed.us, 208-634-0743

Salmon-Challis NF, Salmon, ID

Contact: Gina Knudson
gknudson@fs.fed.us, 208-756-5551

Sawtooth NF, Twin Falls, ID

Contact: Michael Haney
michaelhaney@fs.fed.us, 208-737-3213



Preliminary Workshop Schedule

Times:	May 22: 8:30-5pm	May 23: 8:30-5pm	May 24: 8:30-4pm
Main	Intro/Climate	Vegetation/Wildlife	Carbon/Legal Issues
Topics:	Planning/NEPA	Ecological Disturbance	Communications
	Hydro/Aquatics	Ecosystem Services/Adaptation	Science Partners
	Rec./Infrastructure/Heritage	GIS/Maps/Data	Moving Forward

